

## **Albert Park Yacht Club - Albert Sailing Club Supplementary Sailing Instructions 2022\_23**

**Racing is conducted jointly by Albert Sailing Club and Albert Park Yacht Club, with one club (the 'host club') controlling racing on an alternating basis. The schedule of racing will specify the host club for each specific week.**

**Any reference to 'club', 'course board' or similar in these Sailing Instructions refers to the 'host club'.**

### **SUPPLEMENTARY SAILING INSTRUCTIONS (SSI)**

This sheet is a supplement to Appendix S of the Racing Rules of Sailing.

#### **RULES**

**SSI 1** It is a Club safety requirement that all crew wear adequate covered footwear.

#### **NOTICES TO COMPETITORS (SSI 2)**

**SSI 2** The race office is located at the host club's tower.

#### **CHANGES TO SAILING INSTRUCTIONS (SSI 3)**

**SSI 3** Any change to the sailing instructions will be posted before 1200 on the day it will take effect, except that any change to the schedule of races will be posted by 2000 on the day before it will take effect. This changes SI 3.1

#### **SIGNALS MADE ASHORE (SSI 4)**

**SSI 4.1** Signals ashore will be displayed on the flagstaff of the host club.

**SSI 4.2** When flag AP is displayed ashore, '1 minute' is replaced with not less than 15 minutes in the race signal AP, this changes SI 4.1

#### **RACE START TIME**

**SSI 5** The first divisional start for Saturday Club races is scheduled for 14.30 hours during daylight savings time and 14.00 hours for non-daylight savings time.

#### **DIVISIONS**

**SSI 6** Assignment of classes to divisions and the flag will be displayed on the course board.

#### **COURSES (SSI 7)**

**SSI 7** The courses to be sailed will be described on the course board. A schematic diagram of the course area is detailed in the Appendix.

#### **MARKS (SSI 8)**

**SSI 8.1** The course marks will be yellow flags suspended on poles. If alternative course marks are to be used, they will be described on the course board. A schematic diagram of the course area with mark designations is detailed in the Appendix A.

**SSI 8.2** The start mark will be code flag "G" suspended on a pole at the "Pin" end of the start line.

**SSI 8.3** The finish mark will be a flag suspended on a pole and will match the following description.

- APYC host club, orange flag.
- ASC host club, red flag.
-

### THE START (SSI 9)

**SSI 9** To alert boats to the direction of the course (port or starboard mark rounding), a red or green flag will be displayed not less than 2 minutes before the first warning.

**SSI 10** The warning signal will be made 3 minutes before the starting signal. This changes RRS 26.

**SSI 11** When a starting sequence is in progress, boats whose warning signal has not been made shall avoid the starting area.

**SSI 12** A boat starting later than six minutes after her starting signal will be scored Did Not Start without a hearing. This changes RRS A4.1.

### RECALLS (SSI 13)

**SSI 13** Rule 29.2 is amended to state that the warning signal for the first recalled Division will be displayed at the start of the last Division, except when there are no other Divisions to start. The warning signal of subsequently recalled Divisions may be displayed at the start of the preceding recalled Division.

### SHORTENING COURSE (SSI 14)

**SSI 14** Rule 32.2 is amended to include that a boat which has not sailed the same course as the first boat, shall complete the same course before finishing.

**SSI 15** If the race committee signals a shortened course to home (displaying flag S over H with two sounds), boats shall round the mark on the required side and the finish line shall be the original finish line specified on the course board. A boat which has not sailed the same course as the first boat, shall complete the same course before finishing.

### OUTSIDE HELP (SSI 16)

**SSI 16** A boat can receive assistance from a rescue craft in the event of a capsize or for safety reasons and then continue to compete in the race, as long as such assistance does not advance the boat's position in the race. This changes RRS 41.

### THE FINISH (SSI 17)

**SSI 17.1** The finishing line will be between the host club's tower and the finish mark. Where an alternate finish is to be used it will be described on the course board.

**SSI 17.2** The race committee may finish a boat within a fleet at or near a mark so that other scheduled races can be sailed or, at the discretion of the race officer, if it will be difficult for that boat to finish within the time limit or the finish window. The race committee may not finish a boat in accordance with this clause prior to the first boat in their division finishing. A boat so finished will receive points equal to the position occupied at the time the boat was finished. This changes rules 35, A4 and A5.

### TIME LIMITS (SSI 18)

SSI 18.1	For each division	Race Time Limit (the time limit for the first boat in that <b>class</b> to sail the course and finish, after the starting signal for that boat's division)	Finishing Window (the time for subsequent boats to finish, after the first boat in that <b>class</b> sails the course and finishes)
	Long Course racing	120 Minutes	30 minutes
	Short Course racing	60 minutes	15 minutes

**SSI 18.2** The race target time is 90 minutes for a long course race. The Race Officer may determine shorter or longer Race Time Limits and Finishing Windows, and if so, these amended times shall be described on the course board.

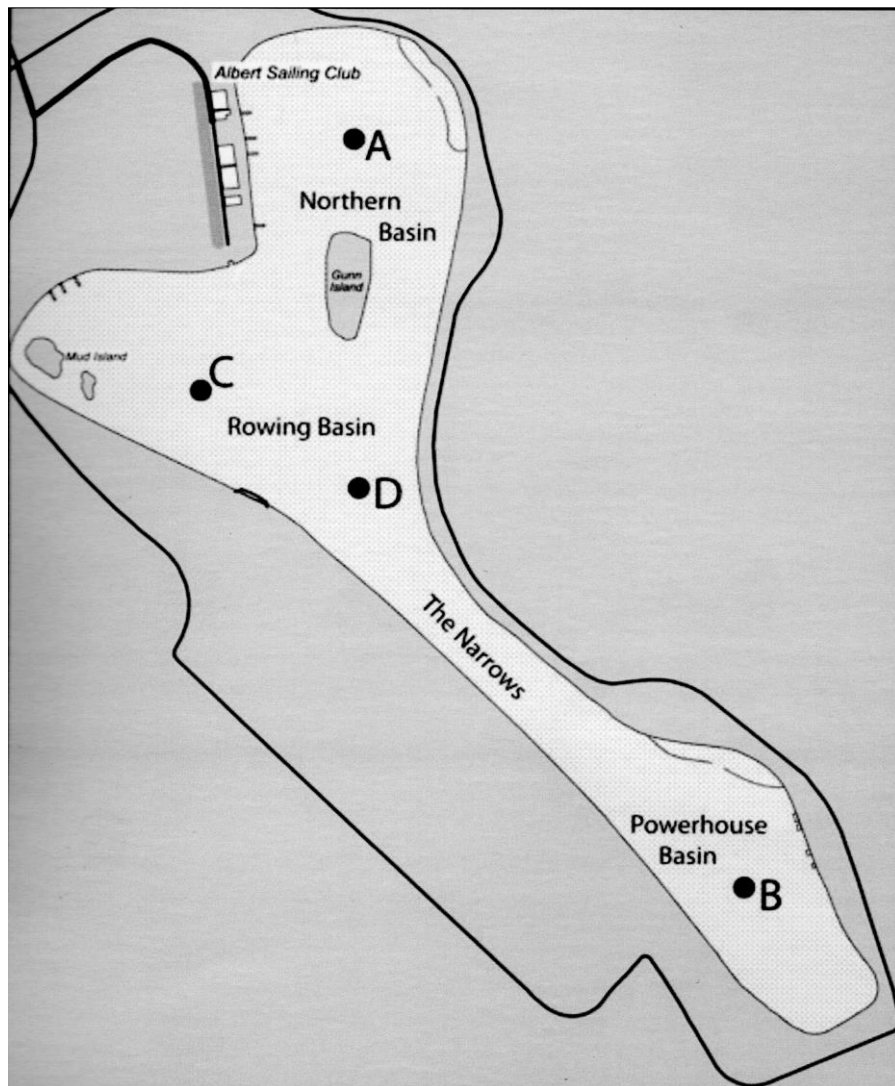
**SSI 18.3** There is no prescribed time limit for the first boat to pass mark 1.

**SAFETY REGULATIONS (SSI 19)**

**SSI 19** For each race session, yachts intending to race shall 'Sign-on' by signing the race sign-on form no later than 15 minutes prior to the 1st warning signal. Yachts shall sign off within thirty minutes of the last boat's finishing time.

**SSI 20** A boat that retires from a race shall notify the race committee as soon as possible.

## Appendix A Course Schematic



Marks are not fixed but rather placed in position each week.

### **Large Triangle**

Comprises Marks A, B, & C.

### **Small triangle**

Comprises Marks A, C, & D.

### **Windward Return**

Comprises the Windward and Leeward marks of the Small triangle of marks A, C, & D.

### **Trapezoid**

A Trapezoid will comprise four marks to be rounded in succession, the location and designation of which will be described on the course board.

The order of rounding of the marks is determined by the position of the start boat, the first mark to windward and the indicated course direction (in accordance with SSI 9).